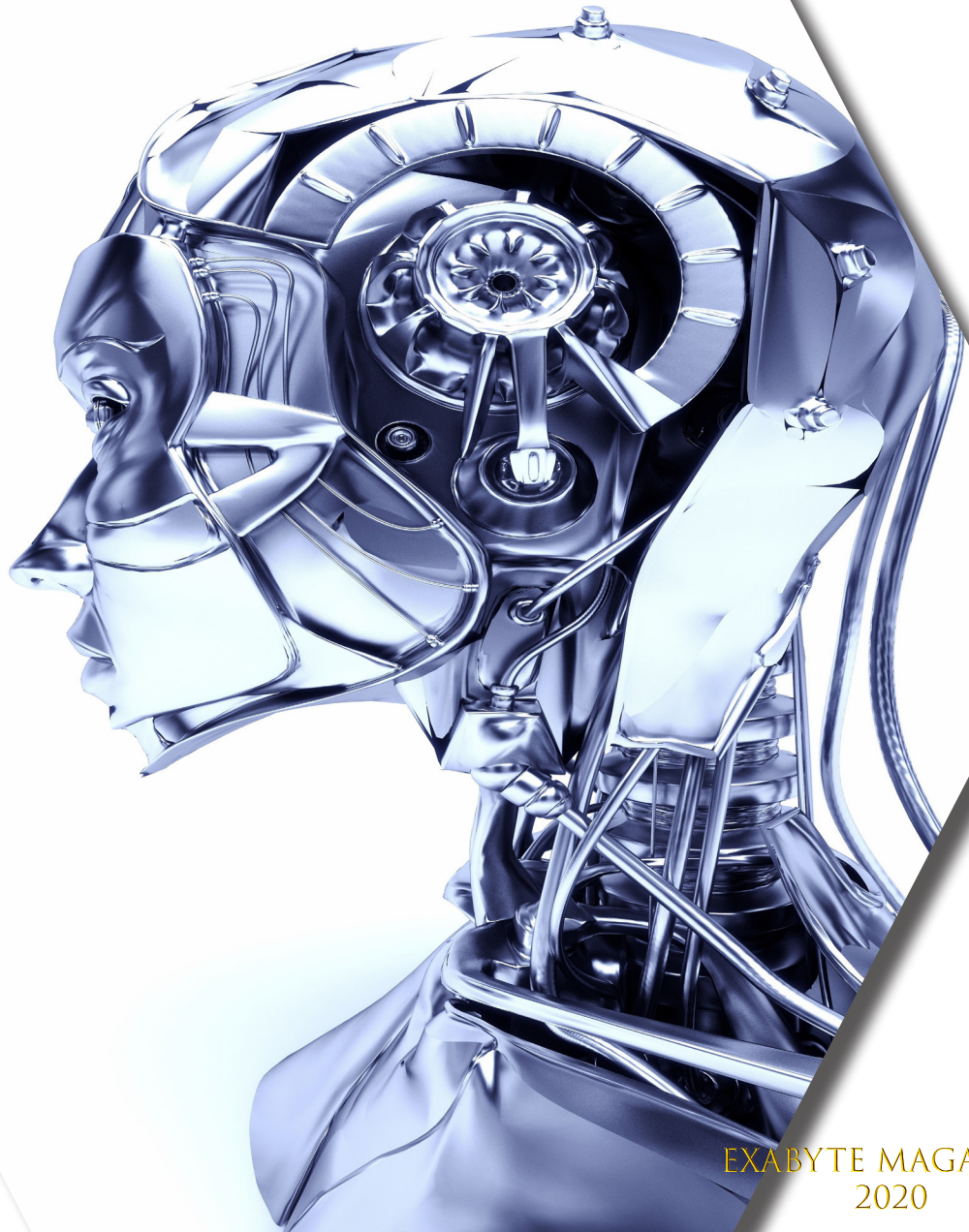


Exabyte

IT Solutions and Consultation



EXABYTE MAGAZINE
2020



“Customer is
a Partner”

WHY EXABYTE!

Exabyte foundation story

It has not been easy decision to enter the Information Technology system Integrators Red ocean, where very high competition between large organizations for market share and profit maximization.

In addition, the rate of technological advancement is high and sometimes a new generation is in the market before we use the functionality of the existing; like the smart phone technology which affected all of the other lines of technology. However, the effect on the infrastructure level is still manageable and on the Small and Medium Enterprises (SMEs) who still need to build the infrastructure, get connected and need some facilities to manage their business is less.

Exabyte has been originally founded under the name of EXPERT on 1996 and was serving computer systems and advertising only, and with the reopening under EX-ABYTE LLC, we are targeting the Small and medium business customer does not have the level of interest; and support services is not as friendly as it should be.

Exabyte team are considered to be very well trained team to deliver an integrated solutions with high quality and provide quality support service that maintains the solution integrity and with the highest capability under reasonable initial and running costs.

In This release

Introduction to Exabyte LLC

Exabyte Business units

System Integration

10 steps to build and operate
your IT system

Exabyte Software

Web-Sites

Web-Applications

Mobile Applications

Exabyte Training

Management

SW development

Soft Skills

Kids



Exabyte Magazine
Release 3.0
2020

ABOUT EXABYTE

Exabyte Vision

LEADING SUCCESSFUL INTEGRATED SOLUTIONS FOR VALUED PARTNERS

Our Mission

Integrate high qualification and high technologies into integrated solutions that meet customer requirements within the dynamic environmental and technological changes in an ethical manner and within cost effective challenge.

Innovation of reliable solutions for volatile, complex, ambiguous and risky challenges.

Analysing, coaching, planning And implementing process re-engineering and improvement plans for individuals, groups and business units of partner's organizations for successful growth and efficient operation.

Our Culture

Exabyte culture built upon the triple pillars

- Ethical
- Learning
- VUCA Prime

Our Values

- Turn Key Solution
- High Quality Service
- Customer is a partner

EXABYTE BUSINESS UNITS

Exabyte Key success factor is that we integrate our qualifications with the technology to deliver high quality product and service to our partners.

IT System Integration

Exabyte Core business unit and we do integrate

- Infrastructure (Design and deployment)
- Networking Solutions
- Power Systems (Solar, UPS, Stabilizers,...)
- Access Control
- Surveillance (In/Out door and recording systems)
- Printing solutions (Printers/Copiers and Systems)

SW Development

Exabyte provides the following SW services

- Basic and dynaic Websites
- Tailored Web Applications

- Tailored Mobile Applications

Consultation Services

Exabyte Consultants support SMEs with

- Business Transformation
- Digital Transformation
- Process Re-Engineering
- Deliver tailored training programs and outsourcing

Training Services

Exabyte delivers the training services on most of the important management topics, such as project and operation management in addition to the soft skills.

Support and Repair

Exabyte repair and support centre is dedicated for the support contracts and repair of our equipment.

System Integration

Exabyte Core business is to integrate the composition of Computer hardware, software, network resources and services required for the existence, operation and management of an enterprise IT environment. It allows an organization to deliver IT solutions and services to its employees, partners and/or customers and is usually internal to an organization and deployed within owned facilities and serves the company strategic objectives by recording or auditing all transactions, monitor and analysis information and employees behaviour and anticipate forecasting through predefined Key Performance Indicators (KPIs) to assure the planned Return on investment (ROI).

You also have the option of choosing between an off-site data centre and a colocation provider, or you can even use cloud storage or hybrid cloud storage, depending on the size, scale, and needs of your business.

Exabyte has partnership with ERP providers who can deliver and customize the ERP systems to meet your exact requirements and then save cost of unwanted features.

10 Steps to build and operate your IT system.

So, you want to build or upgrade up your small or medium business. In this tech-savvy modern world, that means you're going to need to build up your company's IT infrastructure, but what do you need to create the right IT infrastructure for your business and its unique needs? What components will need to go into your IT infrastructure to get your business running efficiently? In this article of Exabyte Magazine, we explain these different components and clarify what you'll need to build a great small and medium business IT infrastructure architecture.

#1. Layout design and network architecture: In this phase, we collect customer, business and environmental requirements into Customer analysis documentation and we customize the layout of the IT infrastructure with budgetary estimate for the budgeting, we define all items and its planned price and time frame for delivery and installation, that might be reviewed multiple time with the customer IT representative until we agree on planned solution. The outcome of this phase is a contract or Purchase Order (PO) to start ordering the equipment and to move to next phase.

#2. Power: Crucial for solution stability: Ultimately, there should be some sort of power sources or management components in the layout design, this could be uninterrupted power supply (UPS), stabilizers, etc.

#3. Cabling: Crucial Links for Power and Connectivity: Cabling is a critical hidden factor in the connectivity performance between different devices. Improper cabling, however, can be the weakest link in your IT infrastructure architecture, you need to make sure you have the appropriate cabling and avoid the most common cabling mistakes. Cabling shall cover all power cables, network cables and surveillance system cables, there might be also special cabling for the fire alarm/fighting system.

#4. Fire fighting and Fire alarm systems: Crucial for safety and regulation: It consists of number of devices working together to detect and warn people through visual and audio appliances when smoke, fire, carbon monoxide or other emergencies are present. These alarms may be activated automatically from smoke/heat detectors, may also be activated via manual fire alarm activation devices such as manual call points or pull stations. Alarms can be either motorized bells or wall mountable sounders or horns. They can also be speaker strobes which sound an alarm, followed by a voice evacuation message which warns people inside the building not to use the elevators.

#5. Data Centres: Do They Have to Be On-Site?

You have a number of options when dealing with data centres, if your company needs one. An on-site data centre require a considerable investment but provides more security on your database and other IT resources. You also have the option of choosing between an off-site data centre and a colocation provider, or you can even use cloud storage or hybrid cloud storage, depending on the size, scale, and needs of your business.

#6. Servers: Do You Really Need Them?: Server may also refer to a physical computer which is strongly dedicated to the purpose of running one or many such services in order to serve the various needs of the programs that are running on the same system network as well as other systems. Dedicated servers are critical components of IT infrastructure, as they allow multiple users to access and share key files and information needed to keep the company running. We do customise the server's configuration to fit business requirements, deliver and support our products to make sure they are performing as planned.

#7. Switches, Routers and Firewalls: Getting Your Devices Talking internal and through internet: Switches are key components of IT infrastructure architecture as they allow your various network devices to “talk” to each other, thereby allowing network communication to occur so you can have an easier time sharing and sending files and information as needed. Routers allow your network to communicate with other networks, including the biggest network of them all: the internet. If you want to connect multiple networks together or connect to the internet (which, in today’s e-commerce and social media driven world, you definitely should), you’ll need at least one of these to keep your company competitive. Firewalls are imperative to protecting your networks from outside attackers. Firewalls enable you to specify what kinds of traffic are permitted through, adding a layer of security. Of course, there are a number of ways to protect your company’s business data, and it’s best to employ as many of them as possible.

#8. Software: Intangible, Drive your business: Not all of your IT infrastructure’s components will be tangible hardware. Your software will play a role in usability, security, and other key factors that determine how well your system works. As a result, you’ll want to be careful in your consideration of operating systems, anti-virus software, programs that you need to manage your business either they are ready-made package like Microsoft suit or tailored / customised Software to ensure your business has the tools it needs to run smoothly.

Most of the medium companies relays on Enterprise resource planning (ERP) packages, ERP is the integrated management of core business processes, often in real-time and mediated by software and technology. ERP is usually referred to as a category of business management software typically a suite of integrated applications that an organization can use to collect, store, manage and interpret data from these many business activities

#9. Printers or Copiers and Computers: Connected or standalone?” The days of standalone copiers or fax machines are long gone. Multifunction printers (MFPs) / printer all-in-ones that print, copy, scan; fax and email all from one device have taken their place. In addition to the connectivity with your network and Wi-Fi, mobile printing and tablet-like touchscreens are the edge.

The MFPs can be also connected to your software to manage the printing rights and collect reports about your em-

ployee’s usage of paper in order to support your saving plans of paper.

Purchasing Computers is one of the first significant purchases you’re likely to make for yourself and any employees. For many people, this may be an easy decision; you might already be loyal to a particular brand because of your personal use, or you’re well-versed in the technical specifications and can easily identify which is the best office computer that meets your needs for your and fits within your budget.

However, it is not that easy to choose between PC and Laptop, choosing the operating system and antivirus, choosing the configuration between the processing speed, memory, storage and screen size. And most important the warranty and support you get.

That all shall be within your budget and we do support your decision in order to get the required machines that support your business without the waist of budget.

#10. System support, Yet Important: Simply keeping the system running and performing, it is an easy objective will not be met without experts who monitor your system take proactive actions to make your system performing and to assure the ROI as planned in day1.

Exabyte offers a complete system support and warranty, repair and support services in our repair centre that allows us to monitor and detect defects that might harm your system before they do and protect your system from partial or full failure.

Finally, when you’re trying to design your company’s IT infrastructure architecture, you can’t afford any mistakes, nor can you afford to find yourself with way too much or way too little. That’s why you should have system integrator from the planning phase supporting your decision and you should remember that the cost of rebuild is quite higher that making the system right from day1.

Exabyte experts are well-versed in IT infrastructure, from the basics all the way to the most advanced architectures. What’s more, we partner with you to determine exactly what your company needs, no more and no less and we work out an IT infrastructure design that will fit your budget. Contact us if you have any questions or to schedule a FREE consultation visit.

Tarek Rajab

SOFTWARE DEVELOPMENT

Software development is the process of conceiving, specifying, designing, programming, documenting, testing, and bug fixing involved in creating and maintaining applications, frameworks, or other software components.

We are focusing on business transformation from business ideas into successfully working systems that support and implement the idea with the best performance, security and data privacy.

Exabyte considered as one of the specific purpose's SW designers and deployers into the local market, and we have got our reputed key projects and customers into action.

We do cover all levels of Web Applications from the Static Website till the complicated Web Application.

Basic and advanced Web-sites

We Offer fully tailored and designed as per the customer needs Web-Sites

1- Ready made theme library

Select from more than 350 pre-designed Web Themes that covers most of the business categories

2- Responsive design UI

We develop fully responsive websites that can be accessed from PC, laptop, tablet or mobile phone.

3- Domain, Hosting and Email

We Offer website name "Domain", space on the cloud to store the website "hosting" and Email addresses on the same domain name

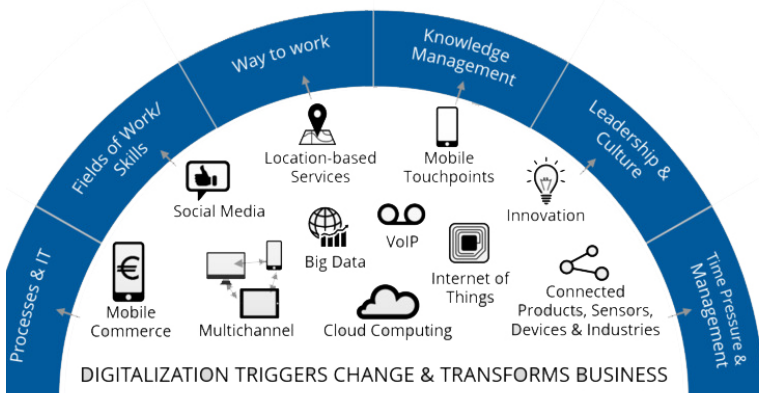
4- Support and Maintenance

We offer unlimited support and maintenance to your Web-site and data.



Web and Mobile Applications

Our Key Experience is to transform your business needs into successfully working IT solution that performs the same manual work with high efficiency and more reliability



1- Native Web and Mobile development

We develop native fully tailored application that fits your requirements only

2- High Performance

We develop fully compatible integrated solutions to ensure high performance

3- Scalable Application

Our developed applications are fully scalable solutions to link with other current or future SYS.

4- Support and Maintenance

We offer unlimited support and maintenance to your solution and data.

CONSULTATION SERVICES

Business strategy Support

A business strategy is a set of competitive moves and actions that a business uses to attract customers, compete successfully, strengthening performance, and achieve organisational goals. It outlines how business should be carried out to reach the desired ends.

We support partners to set the proper business strategy starting from the internal and external factors research and examination, through setting the Vision and Mission till the high level strategy and planning.

Organisation assessment and process re-engineering

Exabyte participate in organisation assessment and re-engineering, introduce advice for career building and development for individuals, groups and organisations.

Organisation Analysis and assessment

Development planning

Support Corporate Governance

Supportive process re-engineering and workflow management

MBTI and career counseling for individuals and groups

TRAINING SERVICES

Exabyte offers in-house and on-site training services introducing an action learning programs for our valuable customer to complete our integrated services message, participate in personal/team/organization development.

We Offer Training Courses in the following categories

Management

Project and Service Management

Marketing and

SoftSkills

Human behaviour development

Team building Skills

Individual Skills build up

SW development

Graphic Design

Web Development

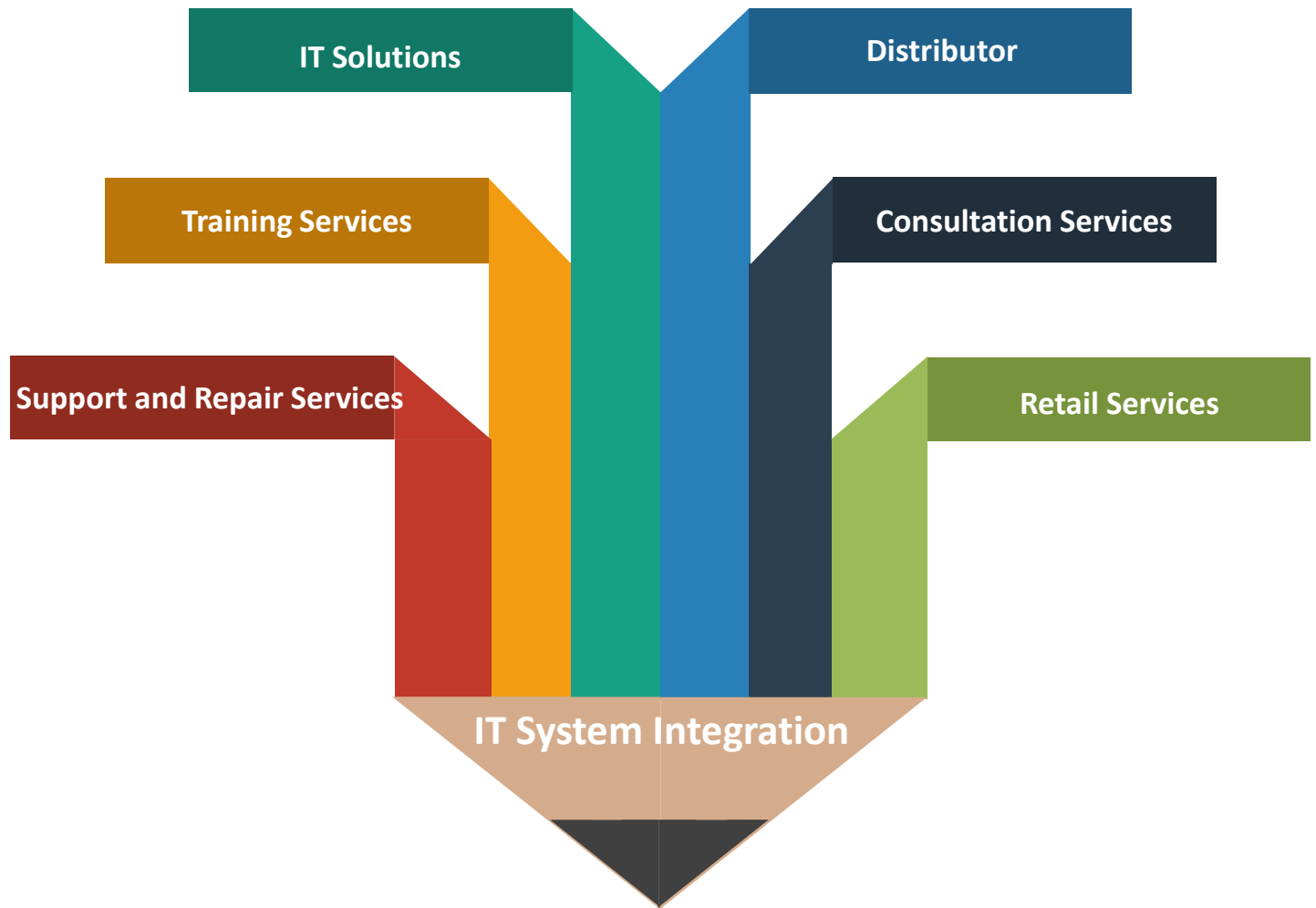
Kids

Electronics and SW

Robotics



EXABYTE BUSINESS UNITS



Addresses:

Management Office:
4A Faroqia towers,
Nozha, Cairo - Egypt

Retail shop :
5C Faroqia towers,
Nozha, Cairo - Egypt

Contact Info

Landline : +202 219 220 37
Vodafone: +2 010 9971 6655
Etisalat: +2 011 4008 1891

www.exabyte-eg.com
info@exabyte-eg.com